

blood

2003 102: 3797-3799
Prepublished online Jul 3, 2003;
doi:10.1182/blood-2003-03-0899

Bone marrow precursor of extranodal T-cell lymphoma

Robert Gniadecki, Ansgar Lukowsky, Kristian Rossen, Hans O. Madsen, Kristian Thomsen and Hans Christian Wulf

Updated information and services can be found at:

<http://bloodjournal.hematologylibrary.org/cgi/content/full/102/10/3797>

Articles on similar topics may be found in the following *Blood* collections:

[Immunobiology](#) (3880 articles)

[Neoplasia](#) (4216 articles)

[Brief Reports](#) (1184 articles)

[Clinical Trials and Observations](#) (2630 articles)

Information about reproducing this article in parts or in its entirety may be found online at:

http://bloodjournal.hematologylibrary.org/misc/rights.dtl#repub_requests

Information about ordering reprints may be found online at:

<http://bloodjournal.hematologylibrary.org/misc/rights.dtl#reprints>

Information about subscriptions and ASH membership may be found online at:

<http://bloodjournal.hematologylibrary.org/subscriptions/index.dtl>



Brief report

Bone marrow precursor of extranodal T-cell lymphoma

Robert Gniadecki, Ansgar Lukowsky, Kristian Rossen, Hans O. Madsen, Kristian Thomsen, and Hans Christian Wulf

The development of extranodal lymphomas is thought to be initiated by the transformation event in peripheral organs. Lymphomatoid papulosis (LyP) is a low-grade cutaneous lymphoma and may progress into the cutaneous anaplastic lymphoma. We identified 2 patients who 3 and 4 years before the development of

LyP were treated for an unrelated malignancy (Burkitt lymphoma and small-cell B-cell lymphoma). We analyzed the T-cell receptor (TCR) gene rearrangement pattern in their skin, blood, and bone marrow, including the archival bone marrow sampled years before the development of clinically evident LyP. In all samples we

detected the unique monoclonal TCR rearrangements. This observation suggests that the initial malignant transformation in LyP occurred in bone marrow and not, as could be supposed, in the skin. (Blood. 2003;102:3797-3799)

© 2003 by The American Society of Hematology

Introduction

The development of most leukemias is initiated by a malignant transformation at the level of the early hematopoietic precursor in the bone marrow¹⁻⁴ that finally differentiates into the malignant phenotype.

The ontogeny of malignant lymphomas is less elucidated, but the initial malignant transformation is supposed to occur at any stage of lymphocyte development. The resulting malignant cell clone remains "arrested" at a particular developmental stage with little subsequent differentiation.⁵

Lymphomatoid papulosis (LyP) is a low-malignant cutaneous CD30⁺ T-cell lymphoma that sometimes clonally evolves into a more aggressive anaplastic large-cell lymphoma (ALCL).⁶⁻⁸ In this paper we describe data on 2 patients in whom characteristic T-cell receptor (TCR) gene rearrangement has been identified in bone marrow years before the emergence of cutaneous lesions of LyP or ALCL. This observation suggests that the initial malignant transformation in these extranodal T-cell lymphomas occurred in bone marrow rather than, as could be assumed, in the skin.

Study design

Case 1

A 36-year-old woman presented in 1996 with Burkitt lymphoma. She had a complete remission after treatment with cyclophosphamide, doxorubicin, vincristine, and prednisone (CHOP). In 1999, she developed LyP (Figure 1A-B) and during the following 4 months erythematous, ulcerated tumors of ALCL developed on the trunk and lower limbs (Figure 1C). During the following 2 months new ALCL lesions appeared, despite local radiotherapy. In 2001, the patient died from the systemic dissemination of ALCL.

Case 2

A 63-year-old man presented in 1996 with small-cell lymphocytic B-cell lymphoma CD5⁻23⁻IgM⁺ involving the spleen, lymph nodes, and bone marrow. He was treated with chlorambucil (1997-1998) with a partial

response. In 1999, he had a relapse and received 6 series of CHOP, which gave full remission during the observation period (up to May 2003). In 1999, while he was receiving CHOP treatment, he developed widespread, papular skin lesions with clinical and histopathologic features of LyP (Figure 1D-E). Partial remission has been achieved during the treatment with methotrexate (15 mg weekly) and PUVA (psoralen and UVA radiation), but LyP recurred after the cessation of the treatment. The disease is actually controlled with maintenance PUVA treatments.

Gene rearrangement studies

Nuclei were released by mechanic disintegration of the formaldehyde-fixed, paraffin-embedded skin biopsies and bone marrow specimens⁹ and analyzed by polymerase chain reaction (PCR) with fluorescence fragment product analysis on an automated capillary electrophoresis DNA sequencer (GeneScan; Applied Biosystems, Weiterstadt, Germany)^{10,11} in the German laboratory by A.L. The PCR products were purified and sequenced on the 310 ABI PRISM (Applied Biosystems).¹¹ To eliminate the possibility of false-positive results (contamination from other samples), the sequences were routinely compared with all other TCR- γ sequences ever found in this laboratory and were confirmed to be unique. Moreover, DNA obtained from freshly sampled bone marrow and blood specimens¹² was independently analyzed for the presence of clonal immunoglobulin heavy chain (IgH) VDJ gene rearrangements and TCR- γ and - δ gene rearrangements by manual sequencing detection¹³ in the Danish center by H.O.M. (case 1). Pooled lymphocytes from healthy donors were used as negative control. Moreover, the minimal residual disease (MRD) analysis was performed^{14,15} using the clone-specific PCR with TCR- γ and IgH sequences detected in the gene rearrangement analysis as clone-specific probes for the T-cell lymphoma and Burkitt lymphoma, respectively.

Results and discussion

In case 1 identical biallelic clonal gene TCR rearrangements were found in the samples of bone marrow, peripheral blood, and skin

From the Department of Dermatology, University of Copenhagen, Bispebjerg Hospital, Copenhagen, Denmark; Department of Dermatology, Humboldt University Charité, Berlin, Germany; Department of Pathology, University of Copenhagen, Bispebjerg Hospital, Copenhagen, Denmark; and Department of Clinical Immunology, The National University Hospital (Rigshospitalet), Copenhagen, Denmark.

Submitted March 31, 2003; accepted June 22, 2003. Prepublished online as *Blood* First Edition Paper, July 3, 2003; DOI 10.1182/blood-2003-03-0899.

Reprints: Robert Gniadecki, Department of Dermatology, Bispebjerg Hospital, Bldg D42, Bispebjerg bakke 23, DK-2400 Copenhagen, Denmark; e-mail: rg01@bbh.hosp.dk.

The publication costs of this article were defrayed in part by page charge payment. Therefore, and solely to indicate this fact, this article is hereby marked "advertisement" in accordance with 18 U.S.C. section 1734.

© 2003 by The American Society of Hematology

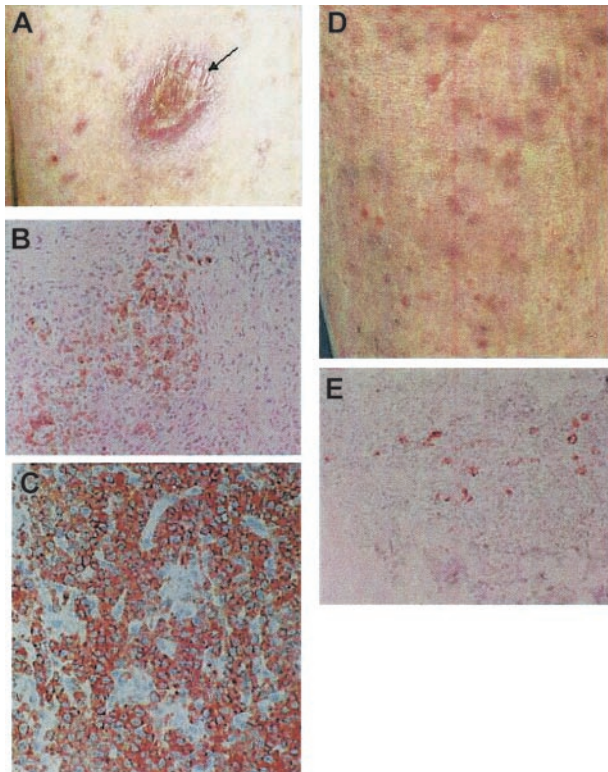


Figure 1. Clinical and histopathologic features of the 2 patients with LyP. Case 1 (A-C) and case 2 (D-E). Arrow in panel A shows the tumor of ALCL; the papular lesions in panels A and D represent LyP. Panels B and E show positive CD30 staining of atypical lymphoid cells in LyP. Panel C shows a more massive infiltration and pronounced atypia of CD30⁺ cells in ALCL. Original magnification, $\times 200$ (B,C,E).

lesions of LyP and ALCL (Table 1). The most important finding was the presence of the clone-specific TCR- γ rearrangement in bone marrow found 4 years later also in skin lesions of LyP and ALCL (Table 1). The frequency of clonally rearranged cells in bone marrow was only 8% in comparison with peripheral blood (Table 1). In case 2 the bone marrow biopsy was obtained in 1997 as a routine diagnostic procedure for non-Hodgkin lymphoma. PCR fluorescence fragment analysis of paraffin-embedded bone marrow samples revealed amplicons corresponding to rearrangement comprising TCR- γ V9-J1/2 (Table 2). An identical PCR pattern was found 2 years later in the cutaneous lesions of LyP (Table 2). The above

results indicate that a clinically silent and histopathologically undistinguishable cell clone bearing the molecular lymphoma fingerprint had already been present in bone marrow years before the development of the cutaneous T-cell lymphoma.

In case of extranodal lymphomas the malignant transformation is thought to take place directly within mature T cells infiltrating or recycling through the target organ.¹⁶⁻²⁰ Many researchers were unsuccessful in their attempts to detect clonal rearrangements in bone marrow of patients with LyP and mycosis fungoides (MF),²¹ which further supported the concept of the skin origin of cutaneous lymphomas. Our observations suggest another scenario in case of LyP, a low-grade cutaneous T-cell lymphoma. We speculate that the precursor malignant clone develops primarily in bone marrow and disseminates to the skin via circulation. Local cutaneous microenvironment permits further differentiation into a mature LyP phenotype, and in some patients even further to ALCL (case 1, Davis et al⁶ and Steinhoff et al⁷). There is probably recirculation of malignant cells between the cutaneous and blood compartments, which explains an over 10-fold higher frequency of clonally rearranged cells in blood than in bone marrow. Our success with the search for bone marrow clone in the 2 described patients was probably due to a higher than usual frequency of bone marrow lymphoma precursors. It is likely that in many patients the proportion of precursor cells is below the resolution power of routine PCR techniques (< 2%-5%). Use of more sensitive detection techniques, such as the clone-specific PCR, could help to identify more patients with bone marrow involvement.

The hypothesis of the existence of bone marrow precursors of LyP explains several biologic properties of this lymphoma that are otherwise difficult to account for by the traditional model assuming malignant transformation in the skin. First, even at the very early stages multiple skin lesions develop in LyP patients suggesting hematogenous dissemination from extracutaneous compartment. Second, even a complete eradication of cutaneous lesions by local radiation therapy or phototherapy cannot prevent the relapse of the disease, suggesting again that the precursor lymphoma cells are not affected by these local modalities. Third, cure cannot be usually obtained even with aggressive, high-dose chemotherapy, but a symptomatic relief on skin lesions can usually be achieved even with low doses of cytostatics. In our case 1, intensive chemotherapy eradicated the malignant B-cell clone but the bone marrow cells harboring the signature TCR rearrangement remained unaffected. It can be speculated that similar to the situation seen in

Table 1. TCR and IgH gene rearrangements in case 1

	Development of Burkitt lymphoma, Feb 1996	Burkitt lymphoma remission after chemotherapy, Dec 1998	Development of LyP, Aug 2000	Development of ALCL, Dec 2000
IgH-VDJ rearrangement in bone marrow*	Present*	Absent*	Absent*	ND
TCR-γ gene rearrangement				
Bone marrow	Biallelic (V2/4-J1/2 and V9-J1/2)*†	Biallelic (V2/4-J1/2 and V9-J1/2)*	Biallelic (V2/4-J1/2 and V9-J1/2)*†	ND
Peripheral blood	ND	ND	Biallelic (V2/4-J1/2 and V9-J1/2)*	ND
Skin lesions	NA	NA	Biallelic (V2/4-J1/2‡ and V9-J1/2§)¶ (lesions of LyP)	Biallelic (V2/4-J1/2‡ and V9-J1/2§)¶ (lesions of ALCL)

ND indicates not done; NA, not applicable.

*Determined by manual sequence analysis and MRD analysis.

†The frequency of bone marrow clone was approximately 8% in comparison with peripheral blood in year 2000.

‡Sequences for the first allele. V segment: ATTACTGTGCCACCTGGGATG; N-region: CCCCTTTCCG; J segment: AGAAACTCTTTGG.

§Sequences for the second allele. V segment: TACTACTGTGCCTTGTGGGAGG; N-region: TGCTTTAGCCACTGG; J-segment: TTATAAGAACTCTTTGG.

¶Determined by PCR and capillary electrophoresis. The sequences were identical with those obtained by manual sequencing of fresh tissue in the samples of the bone marrow, blood, LyP lesions (n = 2) and ALCL lesions (n = 1).

Table 2. TCR rearrangements in case 2

	Development of B-NHL, Sept 1996	Partial remission after chemotherapy, Feb 1997	Lymphoma relapse, CHOP treatment, development of LyP, Aug 1999	B-NHL remission after CHOP, Sept 2000
Clonal TCR-γ gene rearrangement				
Bone marrow	ND	V9-J1/2*	ND	ND
Peripheral blood	ND	ND	Absent	Absent
Skin lesions of LyP	NA	NA	V9-J1/2*	V9-J1/2*

B-NHL indicates B-cell non-Hodgkin lymphoma.

*Sequences determined by PCR and capillary electrophoresis: TACTACTGTGCCTTGT (V segment); GAAACTCTTTGG (J segment).

chronic leukemias, the malignant precursor cells in bone marrow are slowly cycling and are thus not affected by the cytostatics. Fourth, patients with LyP have for unknown reasons a highly (10-fold) increased risk for the development of lymphoid (and to a lesser extent myeloid) malignancies.^{22,23} A concept suggesting a genetic defect at an early stage of multipotent hematopoietic progenitor could provide a plausible mechanistic explanation of this phenomenon, as that suggested for multiple cell-lineage leukemias²⁴ and lymphomas (notably LyP and cutaneous anaplastic lymphoma).⁷ Fifth, a clinically silent malignant clone in patients

with peripheral T-cell lymphoma can be transmitted by allogeneic bone marrow transplantation.²⁵

In summary, our observations are compatible with the view that CD30⁺ cutaneous lymphomas are differentiating systems comprising bone marrow-derived progenitor cells giving rise to the malignant cells in the skin. Further studies are needed to determine the phenotypic characteristics of these progenitor cells. Our concept may provide a framework for the understanding of the biologic properties of LyP and can possibly be extended to other types of peripheral T-cell lymphoma.

References

- Haase D, Feuring-Buske M, Konemann S, et al. Evidence for malignant transformation in acute myeloid leukemia at the level of early hematopoietic stem cells by cytogenetic analysis of CD34⁺ subpopulations. *Blood*. 1995;86:2906-2912.
- Bhatia M, Bonnet D, Murdoch B, Gan OI, Dick JE. A newly discovered class of human hematopoietic cells with SCID-repopulating activity. *Nat Med*. 1998;4:1038-1045.
- Bonnet D, Dick JE. Human acute myeloid leukemia is organized as a hierarchy that originates from a primitive hematopoietic cell. *Nat Med*. 1997;3:730-737.
- Mori H, Colman S, Xiao Z, et al. Chromosome translocations and covert leukemic clones are generated during normal fetal development. *Proc Natl Acad Sci U S A*. 2002;99:8242-8247.
- Zutter MM, Korsmeyer SJ. The biology of low-grade malignant lymphoma. In: Canellos GP, Lister TA, Sklar JL, eds. *The Lymphomas*. Philadelphia, PA: Saunders; 1998:337-351.
- Davis TH, Morton CC, Miller-Cassman R, Balk SP, Kadin ME. Hodgkin's disease, lymphomatoid papulosis, and cutaneous T-cell lymphoma derived from a common T-cell clone. *N Engl J Med*. 1992;326:1115-1122.
- Steinhoff M, Hummel M, Anagnostopoulos I, et al. Single-cell analysis of CD30⁺ cells in lymphomatoid papulosis demonstrates a common clonal T-cell origin. *Blood*. 2002;100:578-584.
- Chott A, Vonderheid EC, Olbricht S, Miao NN, Balk SP, Kadin ME. The dominant T cell clone is present in multiple regressing skin lesions and associated T cell lymphomas of patients with lymphomatoid papulosis. *J Invest Dermatol*. 1996;106:696-700.
- Leers MP, Schutte B, Theunissen PH, et al. Heat pretreatment increases resolution in DNA flow cytometry of paraffin embedded tumor tissue. *Cytometry*. 1999;35:260-266.
- Lukowsky A, Richter S, Dijkstra K, Sterry W, Mucche JM. A T-cell receptor gamma polymerase chain reaction assay using capillary electrophoresis for the diagnosis of cutaneous T-cell lymphomas. *Diagn Mol Pathol*. 2002;11:59-66.
- Mucche JM, Lukowsky A, Asadullah K, Gellrich S, Sterry W. Demonstration of frequent occurrence of clonal T cells in the peripheral blood of patients with primary cutaneous T-cell lymphoma. *Blood*. 1997;90:1636-1642.
- Miller SA, Dykes DD, Polesky HF. A simple salting out procedure for extracting DNA from human nucleated cells. *Nucleic Acids Res*. 1988;16:1215.
- Nyvold C, Madsen HO, Ryder LP, et al. Competitive PCR for quantification of minimal residual disease in acute lymphoblastic leukaemia. *J Immunol Methods*. 2000;233:107-118.
- Verhagen OJ, Willemse MJ, Breunis WB, et al. Application of germline IGH probes in real-time quantitative PCR for the detection of minimal residual disease in acute lymphoblastic leukemia. *Leukemia*. 2000;14:1426-1435.
- van der Velden VH, Wijkhuijs JM, Jacobs DC, van Wering ER, van Dongen JJ. T cell receptor gamma gene rearrangements as targets for detection of minimal residual disease in acute lymphoblastic leukemia by real-time quantitative PCR analysis. *Leukemia*. 2002;16:1372-1380.
- Fishleder A, Tubbs R, Hesse B, Levine H. Uniform detection of immunoglobulin-gene rearrangement in benign lymphoepithelial lesions. *N Engl J Med*. 1987;316:1118-1121.
- Zulman J, Jaffe R, Talal N. Evidence that the malignant lymphoma of Sjogren's syndrome is a monoclonal B-cell neoplasm. *N Engl J Med*. 1978;299:1215-1220.
- Goodlad JR, Davidson MM, Hollowood K, Batstone P, Ho-Yen DO. *Borrelia burgdorferi*-associated cutaneous marginal zone lymphoma: a clinicopathological study of two cases illustrating the temporal progression of *B. burgdorferi*-associated B-cell proliferation in the skin. *Histopathology*. 2000;37:501-508.
- Goodlad JR, Davidson MM, Hollowood K, et al. *Borrelia burgdorferi* infection and primary cutaneous B-cell lymphoma in the Highlands of Scotland. *Am J Surg Pathol*. 2000;24:1279-1285.
- Parsonnet J, Hansen S, Rodriguez L, et al. *Helicobacter pylori* infection and gastric lymphoma. *N Engl J Med*. 1994;330:1267-1271.
- Dommann SN, Dommann-Scherrer CC, Dours-Zimmermann MT, Zimmermann DR, Kural-Serbes B, Burg G. Clonal disease in extracutaneous compartments in cutaneous T-cell lymphomas. A comparative study between cutaneous T-cell lymphomas and pseudo lymphomas. *Arch Dermatol Res*. 1996;288:163-167.
- Wang HH, Myers T, Lach LJ, Hsieh CC, Kadin ME. Increased risk of lymphoid and nonlymphoid malignancies in patients with lymphomatoid papulosis. *Cancer*. 1999;86:1240-1245.
- Beljaards RC, Willemze R. The prognosis of patients with lymphomatoid papulosis associated with malignant lymphomas. *Br J Dermatol*. 1992;126:596-602.
- Keinanen M, Griffin JD, Bloomfield CD, Machnicki J, de la Chapelle A. Clonal chromosomal abnormalities showing multiple-cell-lineage involvement in acute myeloid leukemia. *N Engl J Med*. 1988;318:1153-1158.
- Berg KD, Brinster NK, Huhn KM, et al. Transmission of a T-cell lymphoma by allogeneic bone marrow transplantation. *N Engl J Med*. 2001;345:1458-1463.